



From:  
Countrywide Computers Ltd.  
Victoria House,  
1 High St., Wilburton,  
Cams. CB6 3RB  
Tel: Ely (0353) 740323

## Chess, the intelligent game.



**Mephisto®**

Hegener+Glaser Aktiengesellschaft





## Mephisto chess computers. There is no better partner than a World champion.

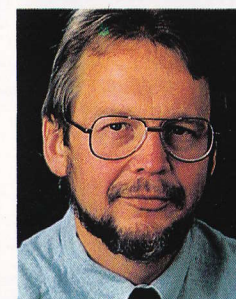
That is certain. For Mephisto in black and white. Who is the best? Who is your best chess teacher? Who has more charisma, is more interesting and deserves more attention than a World champion?

And Mephisto managed to win the World championship 6 times in a row: 1984 in Glasgow, 1985 in Amsterdam, 1986 in Dallas, 1987 in Rome, 1988 in Almeria. And last but not least 1989 in Portorose. Six times World champion! It is no surprise that Mephisto is a real challenge, even for masters. And has become not only the most admired—but also

the most feared—chess partner. Even for chess geniuses like Judit Polgar and her sisters.

Grandmaster Dr. Helmut Pfleger, a well known chess author and TV commentator, is full of praise:

"Mephisto chess computers do have a notable playing strength, are formidable opponents and valuable partners. They are excellent for intelligence training. They are entertaining. They fascinate, because they never become boring."



There are Mephisto chess computers for all chess players: beginners, tournament players, masters, World champions and players wanting to become a champion. Mephisto is the right partner for everyone. Also for you!





## Make it easy to start with the World Champion.

Attention... Before you start reading about the intelligent chess computer world, we would like to give you a few tips that could be useful in choosing the right chess computer.

First, the number of playing levels of a chess computer tells nothing about the playing strength. Just as the number of pieces does not tell you how large a cake is. So: do not be confused by such information.

Second, the playing strength of your chess computer should always be higher than your own. In this way you will learn more and you

will enjoy playing your computer much longer.

Third, the most important qualifications of a chess computer are: playing strength, training features and comfortable operating.

Beginner or experienced player, it does not matter. With Mephisto you will become the best in your class. Mephisto helps you, step by step. Warns you in a friendly way when having just made a bad move, and shows you what to do to play a better one. The instructions are written in such a way that they are easy to follow. This means Mephisto is not only a teacher for adults.

It is also the favourite teacher of children. It trains the intelligence and the memory. Improves the concentration ability. And gives you a lot of fun! All people agree: Mephisto is great!

Well, we are ready to start:

### Mephisto® chess school a

Together with a textbook, written by Grandmaster Dr. Helmut Pfleger/Ossi Weiner, this is THE way of learning chess. An excellent chess computer for both youngsters and adults.

And the best chess coach. To improve your personal playing strength. Beginners and advanced players can enjoy playing this computer for a long time.

### Mephisto® college

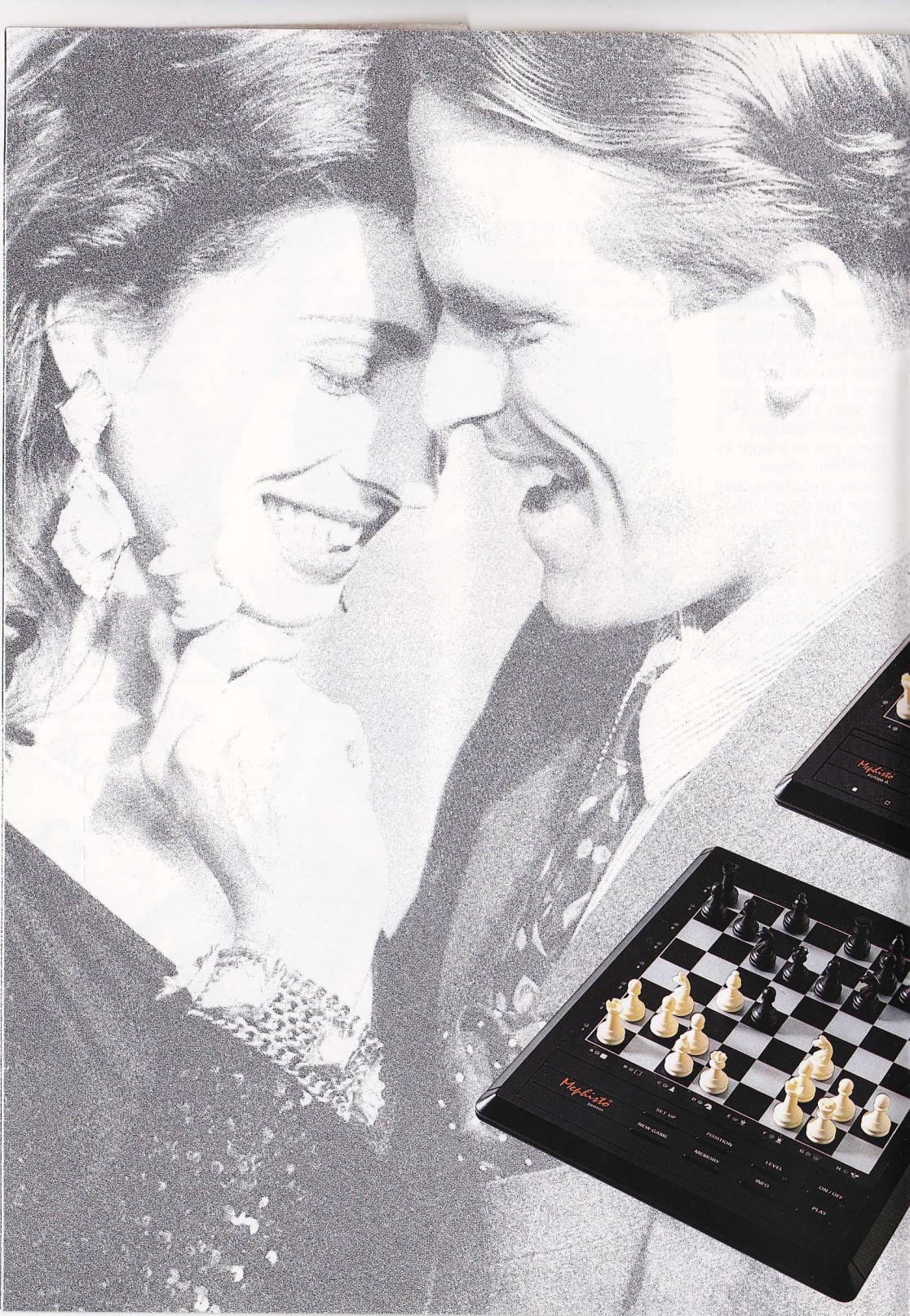
Chess computer including textbook, with the purpose of improving your chess knowledge. And your chess skills. A strong and fast calculating program. 100 problems in memory. Two different playing styles.

### Mephisto® academy

Your chance to become a perfect chess player: here you will find guidance to improve your strategy and tactics. Big opening library gives you an insight into modern chess theory. This chess computer has one of the strongest 8 bit programs. The built-in Elo-system makes it possible to adapt the computer to your own playing strength! A computer that will fire you with enthusiasm for a long time.







## First class sets. First class prices.

These Mephisto chess computers are highly recommended: Their excellent features. Their playing strength. And last but not least their price! A first class production by Mephisto for all its chess friends. For beginners through club players.

### Mephisto<sup>®</sup> junior

In spite of mini price: maxi performance. A wonderful opportunity to start playing chess. Plays the most important standard opening lines. Ideal both for beginners and occasional players.

### Mephisto<sup>®</sup> europa a

An interesting computer for hobby and club players as well as beginners. a program with maximal performance for a minimal price! Numerous features. Modern sensory board. Easy to operate. Simply first class!

### Mephisto<sup>®</sup> mondial II

Playing against this computer you will not only be mastering the basics, but growing in ability to analyse and calculate. This computer is a terrific player for a relatively low price. Fully suitable for beginners and occasional players as well as the advanced players.





## Travelling, accompanied by your chess friend.

### Mephisto®

#### mini

The smallest Mephisto. Pocket size. But: the size misleads! This little one is hard to beat. For beginners and occasional players. Exciting play. Handy. With nice features. Helps you to improve your playing discipline by means of built-in chess clocks. Can even evaluate the position. And when you lose, stick it back in your pocket!

interesting for both beginners and advanced players.

This little machine has 50 playing levels of which 16 are specially for beginners. If you wish, the Marco Polo warns you when you have just made a mistake. And it will store the position in its memory, when you want to continue the game next day. A little darling, this chess computer. Everybody wants to have it. But nobody wants to part with it. Because of this we have a special advice for you: to keep peace in your family – buy one of your own!

### Mephisto®

#### marco polo

The globe-trotter. The classic travel chess computer. Becomes a member of the whole family. Because it is



## Allround chess partners.



### Mephisto®

#### monte carlo IV

Chess computers with the number IV belong to the family of strong

### Mephisto®

#### supermondial II

The chess computer you are looking for: with its fast and strong playing program it is even difficult for an experienced club player to hold his own against this micro genius. A really intelligent fellow, that will teach you a lot about chess! 40 playing levels, 2 playing styles and 8 levels for problem solving. And it has much more to offer. The right chess computer for all players wanting to have a strong partner.



est 8 bit programs. Therefore the Monte Carlo IV is one of the most powerful opponents you could choose. But: do not worry! It is not only your opponent. It is also your partner. It will try to help you as much as possible to become a chess wizard! It shows you how to choose the right opening variations. And plays the style you want it to play: more positionally or more tactically. Everything this computer offers can be read in our schedule on page 18/19. Or better: you can find it out for yourself!





## Mephisto Modular Series: The luxury of always being up to date.

The Mephisto Modular Series brings a new dimension to your chess partnership. Based on the auto sensory boards Modular, Exclusive or München, we can now offer you two excellent new programs: The strong playing MM V and the Polgar, for club and tournament players. You can either upgrade your existing Modular, Exclusive or München model or buy the entire chess computer.

The modular system has one big advantage: you can exchange the modules to provide your computer with the program having the playing strength you want, whenever you want. So you need not buy a new board! In playing strength and technical development, our modules are always up to date. To improve your play. And to increase your enthusiasm!

### **Mephisto®** modular IV/V

30 x 35 cm auto sensory board. Modern styling. The program MM IV/V can be used by beginners, as well as by tournament players. Both are reckoned among the top playing programs. The MM IV program is enjoyed and praised for its human-like playing style. And the MMV program, impressing by its strategy, tactics and great performance. You can study them both from the schedule on page 20/21. The range of features are first class. You'd better find out for yourself!



### **Mephisto®** modular polgar

The Chess Academy program for the modular system: Includes the special chess course. This top program has been developed especially for tournament chess and chess training. You can find its impressive possibilities on page 20/21. Auto sensory board is the same as with Modular IV/V. A chess computer for champions and for players wanting to be a champion, thanks to Mephisto.



### **Mephisto®** exclusive IV/V exclusive polgar

Technical data identical to the Modular models. The appearance even more appealing. A superb luxury wooden chess board, 41 x 41 cm. Full electronic. With 64 LEDs. Handmade wooden pieces, a chess computer that gives you the feeling of being a king.

### **Mephisto®** münchen IV/V münchen polgar

The same technical data as the Modular and Exclusive models but with a royal chess board. Highest quality workmanship. Handmade luxury wooden chess board. Tournament board size 50 x 50 cm. The pieces, also made out of luxury wood. The king size: 90 mm. A harmonic example of the two royal characteristics: intelligence and beauty.



**We are the champions...!**

**Mephisto®**

**portorose  
16/32 bit**

Inspired by the World champions, star programmer Richard Lang succeeded in developing the World's best chess program:

Portorose, named after the city where in 1989 the Micro computer World championships took place. This very strong top program even offers you a choice of styles "solid", "active" or "risky"! You can learn of its incredible performance level in the schedule on page 20/21.

The Portorose program is available in the highlight of operating possibilities – Bavaria chess board. The Bavaria board is unique: the built-in electronics recognize the pieces! So you have more time to think. Which is necessary to play this partner...

We wish you a lot of success. And, enjoy the game! You know: practice makes perfect!







## Modules: Always new, always different. Just like the people who buy them!

Changing modules is the most exciting and satisfying way to ensure your game continues to progress. May be to become a real chess master.

### Mephisto® module mondial II

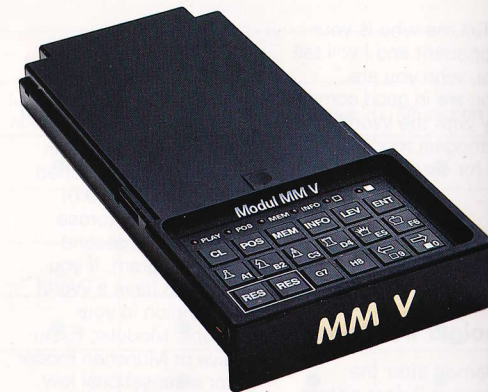
Aren't you satisfied with your Mondial anymore? Because you beat it so many times? Stay calm! With this module you will make a double Mondial out of your single one: namely Mondial III! And now: good luck, you need it!

### Mephisto® module MM V

The super-module, that makes a super partner out of your Mobil, Modular, Exclusive or München model. If you are striving for superlatives.

### Mephisto® openings module HG 550

Games can be won or lost in the opening. This module will show you how to play the openings correctly. Together with the MM V this module increases the number of opening lines to approx. 3,000 and more than 20,000 positions. So: When you want to make a fine start....



### Mephisto® mobil LCD accessory

The LCD accessory turns your MM IV/V or Roma II into a neat, compact travel chess computer. More exciting than the trip itself! Warning: when you are travelling by train, don't forget to get out at the right station!



## The best partners of the world!

"Tell me who is your opponent and I will tell you who you are."  
You are in good company with the World's strongest modules, that is for sure!

### Mephisto® polgar module set

Named after the famous Polgar sisters from Hungary. Ultra strong 8 bit chess program, suitable for all Modular, Exclusive and München models.

### Mephisto® module roma II

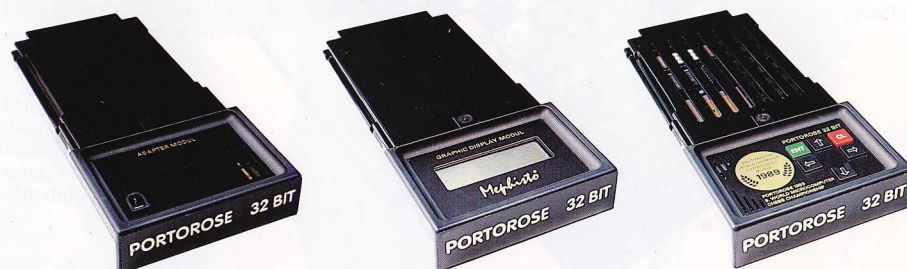
The World champion from 1987: it crushed the opposition 9:0! After the Portorose module the second best program. If you want to have a World champion in your Mobil, Modular, Exclusive or München model for a sensational low price! Congratulations on your new partner!



### Mephisto® portorose module set 16/32 bit

It's better to lose against a top player than to beat a lowly beginner. Those in agreement with this should get themselves a Portorose module set.

Upgrade your Modular (only 16 bit), Exclusive or München model. Belong to the elite owning a World champion.



### Combinations in the modular system

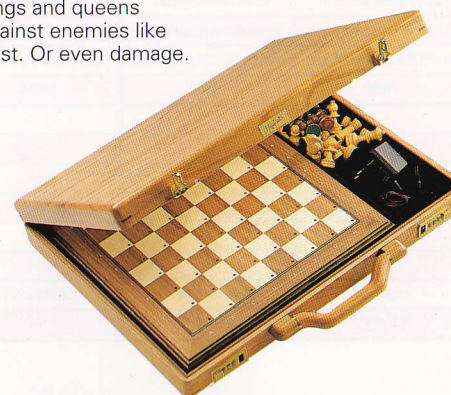
Basic model	Mobil LCD accessory	Modular	Exclusive	München
Module MM V	●	●	●	●
Module HG 550*	—	●	●	●
POLGAR module set	—	●	●	●
Module ROMA II	●	●	●	●
PORTOROSE module set 16 Bit	—	●	●	●
PORTOROSE module set 32 Bit	—	—	●	●

\*only to be used together with the MM V module

## Hiding in a suitcase...

The right bodyguard for your chess partner: a suitcase made out of beautiful imitation leather, or even luxury wood. Protects your kings and queens against enemies like dust. Or even damage.

The right accessory for a royal game!  
**Luxury wood suitcase** for all Exclusive models



### Superb imitation leather suitcase for


— BK 450 for MONDIAL II, SUPER-MONDIAL II and COLLEGE

— BK 550 for all MODULAR-Types  
— BK 600 for ACADEMY and MONTE CARLO IV  
— BK 650 for all EXCLUSIVE-Types



## Easy to choose.

Select the right partner for you from MEPHISTO's range of computers.

	<b>Mephisto®</b> chess school a	<b>Mephisto®</b> college	<b>Mephisto®</b> academy	<b>Mephisto®</b> junior	<b>Mephisto®</b> europa a	<b>Mephisto®</b> mondial II	<b>Mephisto®</b> mini	<b>Mephisto®</b> marco polo	<b>Mephisto®</b> supermondial II	<b>Mephisto®</b> monte carlo IV
										
Master										
Expert										
Tournament player										
Club player										
Advanced player										
Occasional player										
Novice										
Chess tutor	●	●	●	—	●	—	—	●	—	—
Microprocessor	6301 Y	6502 (8 bit)	6502 (8 bit)	Single Chip	6301 Y	6502 (8 bit)	Single Chip	6301 Y	6502 (8 bit)	6502 (8 bit)
Program memory (ROM)	16 KByte	48 KByte	48 KByte	4 KByte	16 KByte	32 KByte	4 KByte	16 KByte	32 KByte	32 KByte
Input of moves	pressure sensors	pressure sensors	magnetic sensors	pressure sensors	pressure sensors	pressure sensors	sensors activated by sticking in pieces	sensors activated by sticking in pieces	pressure sensors	magnetic sensors
Display of moves	16 LEDs	2 LCD display, 16 LEDs	graphic LCD display, 64 LEDs	16 LEDs	16 LEDs	16 LEDs	LCD display	16 LEDs	2 LCD display, 16 LEDs	2 LCD display, 64 LEDs
Levels	50	48 + 2 playing styles	adjustable at will	36	50	8	16	50	48 + 2 playing styles	48 + 2 playing styles
4-time chess clock	—	●	●	—	—	—	2-time chess clock	—	●	●
Move take back	10 plies	●	●	2 plies	10 plies	●	2 plies	10 plies	●	●
Display of analysis depth	●	●	●	—	●	●	—	●	●	●
Move counter	—	●	●	—	—	—	—	—	●	●
Position evaluation	—	●	●	—	—	—	●	—	●	●
Display of mainline	1 ply	6 plies	4 plies	1 ply	1 ply	2 plies	1 ply	1 ply	6 plies	6 plies
Opening book	over 500 variations	over 500 variations	over 3000 variations	●	over 500 variations	over 1000 variations	—	over 500 variations	over 500 variations	over 500 variations
Max. analysis depth (tournament tempo)	10 plies	16 plies	16 plies	8 plies	10 plies	10 plies	7 plies	10 plies	16 plies	16 plies
Solves problems up to	mate in 6	mate in 8*	mate in 8*	mate in 4	mate in 6	mate in 8*	mate in 4	mate in 6	mate in 8*	mate in 8*
Blitz- and tournament games	tournament	blitz/tournament	blitz/tournament	tournament	tournament	tournament	tournament	tournament	blitz/tournament	blitz/tournament
Power supply	mains adap./batteries	mains adap./batteries	mains adapter	mains adap./batteries	mains adap./batteries	mains adap./batteries	batteries	batteries	mains adap./batteries	mains adap./batteries
Dimensions	ca. 23 x 29 x 2,7 cm	ca. 25,5 x 31,5 x 2,5 cm	ca. 31,5 x 37 x 3,7 cm	ca. 23 x 29 x 2,7 cm	ca. 23 x 29 x 2,7 cm	ca. 25,5 x 31,5 x 2,5 cm	ca. 10 x 16 x 2,5 cm	ca. 17,5 x 15 x 3 cm	ca. 25,5 x 31,5 x 2,5 cm	ca. 31,5 x 37 x 3,7 cm
Approx. Elo rating **	1750	2000	2100	1600	1750	1880	1200	1750	2000	2000
<b>Accessoires:</b>										
Polgar module set	—	—	—	—	—	—	—	—	—	—
Module Roma II	—	—	—	—	—	—	—	—	—	—
Opening module HG 550	—	—	—	—	—	—	—	—	—	—
Portoroze 16/32-bit module set	—	—	—	—	—	—	—	—	—	—
Mobil LCD attachment	—	—	—	—	—	—	—	—	—	—
Mains adapter (international equivalents available)	included	included	included	HGN 5001	HGN 5001	HGN 5001	—	—	HGN 5001	HGN 5001
Cases	—	BK 450	BK 600	—	—	BK 450	—	—	BK 450	BK 600

\*also looks for alternative solutions

\*\*please note: these are German Elo-ratings



Easy to choose.

Select the right partner for you from MEPHISTO's range of computers.

**Mephisto®**

modular IV/V



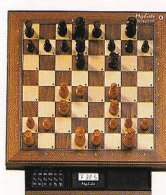
**Mephisto®**

modular polgar



**Mephisto®**

exclusive IV/V



**Mephisto®**

exclusive polgar



**Mephisto®**

münchen IV/V



**Mephisto®**

münchen polgar



**Mephisto®**

exclusive portorose 16 bit



**Mephisto®**

münchen portorose 16 bit



**Mephisto®**

münchen portorose 32 bit



World champion program

World champion program

World champion program

Master									
Expert									
Tournament player									
Club player									
Advanced player									
Occasional player									
Novice									
Chess tutor	●	●	●	●	●	●	●	●	●
Microprocessor	6502 (8 bit)	6602 (8 bit)	6502 (8 bit)	6502 (8 bit)	6502 (8 bit)	6502 (8 bit)	68.000 (16 bit)	68.000 (16 bit)	68020 (32 bit)
Program memory (ROM)	32 KByte	64 KByte	32KByte	64 KByte	32 KByte	64 KByte	128 KByte	128 KByte	128 KByte
Input of moves	magnetic sensors	magnetic sensors	magnetic sensors	magnetic sensors	magnetic sensors	magnetic sensors	magnetic sensors	magnetic sensors	magnetic sensors
Display of moves	LCD display, 64 LEDs	graphics LCD, 64 LEDs	LCD display, 64 LEDs	graphics LCD, 64 LEDs	LCD display, 64 LEDs	graphics LCD, 64 LEDs	graphics LCD, 64 LEDs	graphics LCD, 64 LEDs	graphics LCD, 64 LEDs
Levels	18	adjustable at will	18	adjustable at will	18	adjustable at will	adjustable at will	adjustable at will	adjustable at will
4-times chess clock	●	●	●	●	●	●	●	●	●
Move take back	●	●	●	●	●	●	●	●	●
Display of analysis depth	●	●	●	●	●	●	●	●	●
Move counter	●	●	●	●	●	●	●	●	●
Position evaluation	●	●	●	●	●	●	●	●	●
Display of mainline	5 plies	4 plies	5 plies	4 plies	5 plies	4 plies	11 plies	11 plies	11 plies
Opening book	over 500 variations	over 2000 variations	over 500 variations	over 2000 variations	over 500 variations	over 2000 variations	over 10000 variations	over 10000 variations	over 10000 variations
Max. analysis depth (tournament tempo)	16 plies	30 plies	16 plies	30 plies	16 plies	30 plies	31 plies	31 plies	31 plies
Solves problems up to	mate in 8*	mate in 8*	mate in 8*	mate in 8*	mate in 8*	mate in 8*	mate in 16*	mate in 16*	mate in 16*
Blitz- and tournament games	blitz/tournament	blitz/tournament	blitz/tournament	blitz/tournament	blitz/tournament	blitz/tournament	blitz/tournament	blitz/tournament	blitz/tournament
Power supply	mains adapter	mains adapter	mains adapter	mains adapter	mains adapter	mains adapter	mains adapter	mains adapter	mains adapter
Dimensions	ca. 30 x 35 x 3,5 cm	ca. 30 x 35 x 3,5 cm	ca. 41 x 41 x 4 cm	ca. 41 x 41 x 4 cm	ca. 50 x 50 x 6 cm	ca. 50 x 50 x 6 cm	ca. 41 x 41 x 4 cm	ca. 50 x 50 x 6 cm	ca. 50 x 50 x 6 cm
Approx. Elo- rating **	2050	2100	2050	2100	2050	2100	2300	2300	2350
<b>Accessoires:</b>									
Polgar module set	●	—	●	—	●	—	●	●	●
Module Roma II	●	●	●	●	●	●	●	●	●
Opening module HG 550	●	—	●	—	●	—	—	—	—
Portorose 16/32-bit module set	16 Bit only	16 Bit only	●	●	●	●	—	—	—
Mobil LCD-attachment	●	—	●	—	●	—	—	—	—
Mains adapter (international equivalents available)	HGN 5001	HGN 5001	HGN 5001	HGN 5001	HGN 5001	HGN 5001	HGN 5004 A	HGN 5004 A	HGN 5004 A
Cases	BK 550	BK 550	BK 650/hardwood	BK 650/hardwood	—	—	BK 650/hardwood	—	—

\*also looks for alternative solutions

\*\*please note: these are German Elo-ratings



## Easy to choose.

Select the right partner for you from MEPHISTO's range of computers.

**Mephisto®**

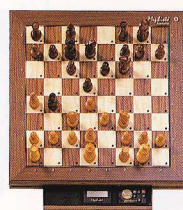
bavaria 16 bit



World champion program

**Mephisto®**

bavaria 32 bit



World champion program

**Mephisto®**

mobil MM IV/V



**Mephisto®**

polgar module set



**Mephisto®**

roma II module



**Mephisto®**

World champion module  
portorose 16 bit



**Mephisto®**

World champion module  
portorose 32 bit



Master							
Expert							
Tournament player							
Club player							
Advanced player							
Occasional player							
Novice							
Chess tutor	•	•	•	•	•	•	•
Microprocessor	68000 (16 bit)	68020 (32 bit)	6502 (8 bit)	6502 (8 bit)	68.000 (16 bit)	68.000 (16 bit)	68.020 (32 bit)
Program memory (ROM)	128 KByte	128 KByte	32 KByte	64 KByte	64 KByte	128 KByte	128 Byte
Input of moves	piece recognition	piece recognition	keys	magnetic sensors***	magnetic sensors***	magnetic sensors***	magnetic sensors***
Display of moves	graphics LCD, 64 LEDs	graphics LCD, 64 LEDs	LCD display	graphics LCD, 64 LEDs***	LCD display, 64 LEDs***	graphics LCD, 64 LEDs***	graphics LCD, 64 LEDs***
Levels	adjustable at will	adjustable at will	18	adjustable at will	adjustable at will	adjustable at will	adjustable at will
4-time chess clock	•	•	•	•	•	•	•
Move take back	•	•	•	•	•	•	•
Display of analysis depth	•	•	•	•	•	•	•
Move counter	•	•	•	•	•	•	•
Position evaluation	•	•	•	•	•	•	•
Display of mainline	11 plies	11 plies	5 plies	4 plies	8 plies	11 plies	11 plies
Opening book	over 10.000 variations	over 10.000 variations	over 500 variations	over 2000 variations	over 5000 variations	over 10.000 variations	over 10.000 variations
Max. analysis depth (tournament tempo)	31 plies	31 plies	16 plies	16 plies	23 plies	31 plies	31 plies
Solves problems up to	mate in 16*	mate in 16*	mate in 8*	mate in 8*	mate in 12*	mate in 16*	mate in 16*
Blitz- and tournament games	blitz/tournament	blitz/tournament	tournament	blitz/tournament	blitz/tournament	blitz/tournament	blitz/tournament
Power supply	mains adapter	mains adapter	mains adap./batteries	mains adapter	mains adapter	mains adapter	mains adapter
Dimensions	ca. 50 x 50 x 6 cm	ca. 50 x 50 x 6 cm	ca. 24 x 10 x 3 cm	—	—	—	—
Approx. Elo rating **	2350	2400	2050	2100	2150	2300	2350
<b>Accessoires:</b>							
Polgar module set	—	—	—	—	—	—	—
Module Roma II	—	—	•	—	—	—	—
Opening module HG 550	—	—	—	—	—	—	—
Portorose 16/32-bit module set	—	—	—	—	—	—	—
Mobil LCD attachment	—	—	included	•	•	—	—
Mains adapter (international equivalents available)	HGN 5004 A	HGN 5004 A	HGN 5001	HGN 5001	HGN 5001	HGN 5004 A	HGN 5004 A
Cases	—	—	—	—	—	—	—

\*also looks for alternative solutions

\*\*please note: these are German Elo-ratings

\*\*\* when used in a Modular-, Exclusive- or München-sensory chess board